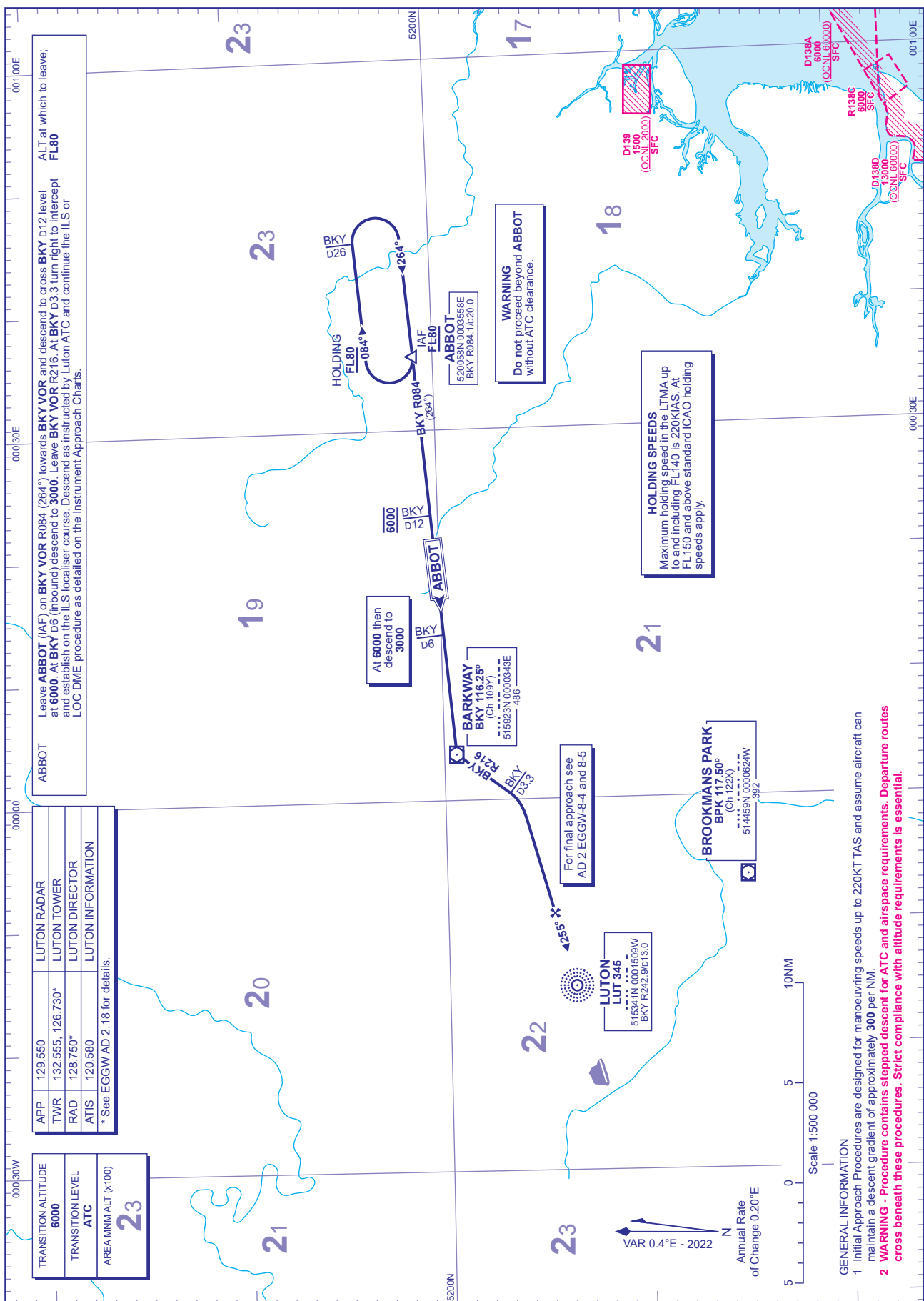


INITIAL APPROACH PROCEDURES
ILS RWY 25 Without Radar Control

DISTANCES IN NAUTICAL MILES
BEARINGS, TRACKS AND RADIALS ARE MAGNETIC
ALTITUDES AND ELEVATIONS ARE IN FEET

LONDON LUTON
via ABBOT



CHANGE (9/25): TOWER FREQUENCY.

AERO INFO DATE 11 JUN 25

GENERAL INFORMATION
1 Initial Approach Procedures are designed for manoeuvring speeds up to 220KT TAS and assume aircraft can maintain a descent gradient of approximately 300 per NM.
2 **WARNING** - Procedure contains stepped descent for ATC and airspace requirements. Departure routes cross beneath these procedures. Strict compliance with altitude requirements is essential.

AD 2-EGGW-7-18